

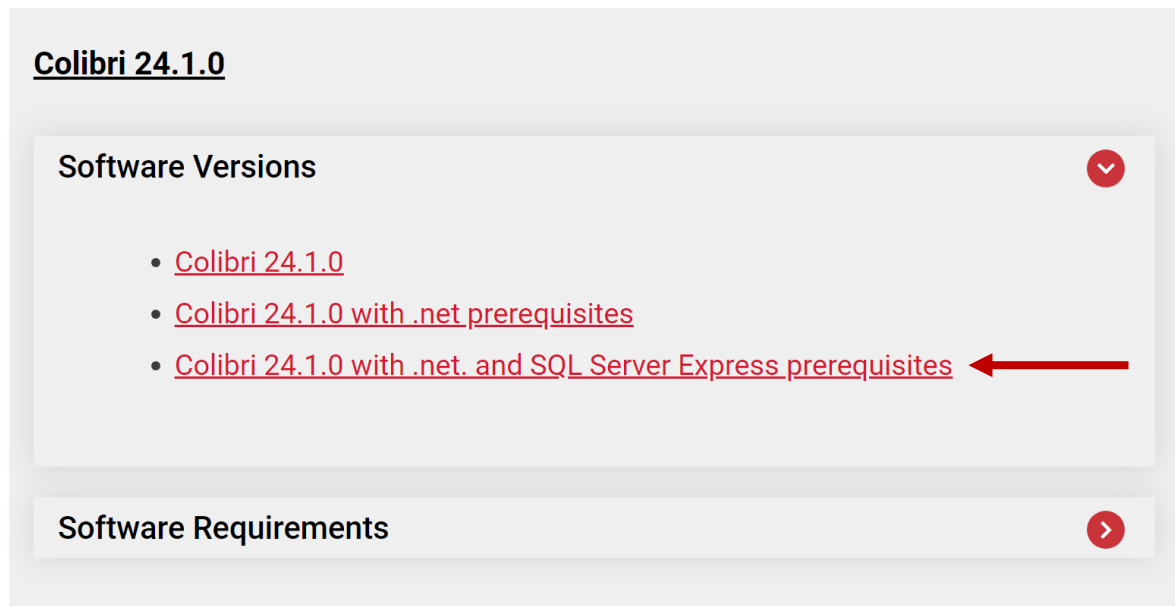
Colibri 24.1.0 Installation

Colibri installation

Visit the Datacolor website to download your Colibri installation package:

<https://www.datacolor.com/business-solutions/customer-support/colibri-software-downloads/>

Select the **Colibri 24.1.0** installation package **with prerequisites**:



Make sure to execute the installation package with Windows **administrative rights** and follow the installation wizard.

License request and installation

Once installed, you will be prompted to request for a license:

- try to start Colibri
- select to request a license
- fill in the form
- save as txt
- e-mail the registration text file to support@matchmycolor.com, explaining the reason for the new request, together with your **invoice number** if applicable.

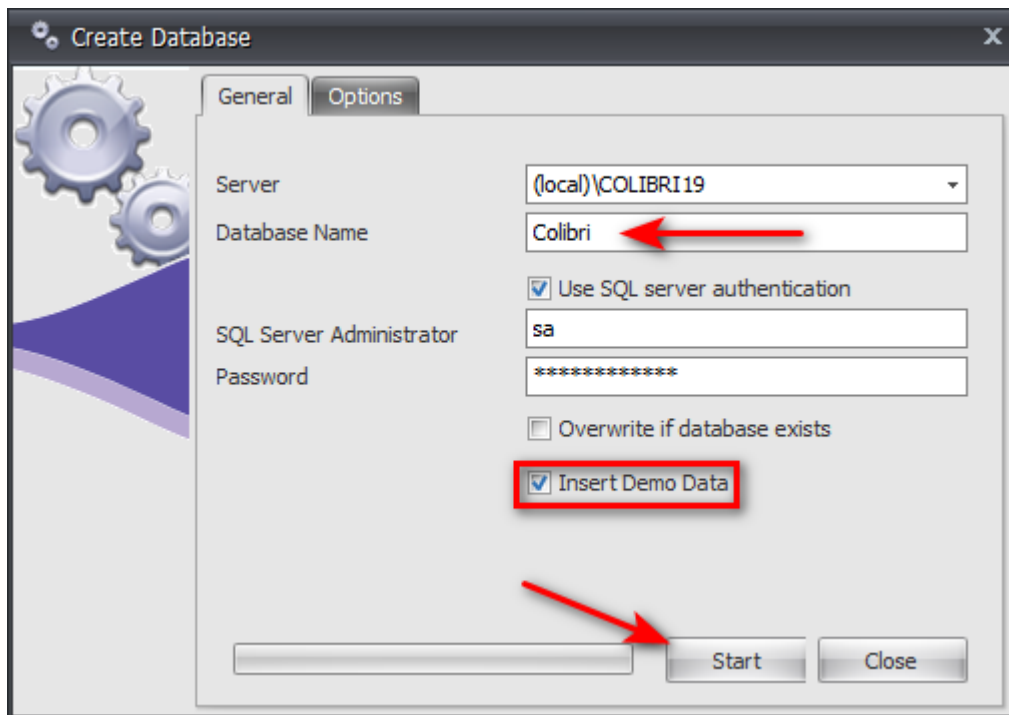
We will issue a license and send it back to you. Try again to start Colibri and select the license file you've been provided.

Database creation

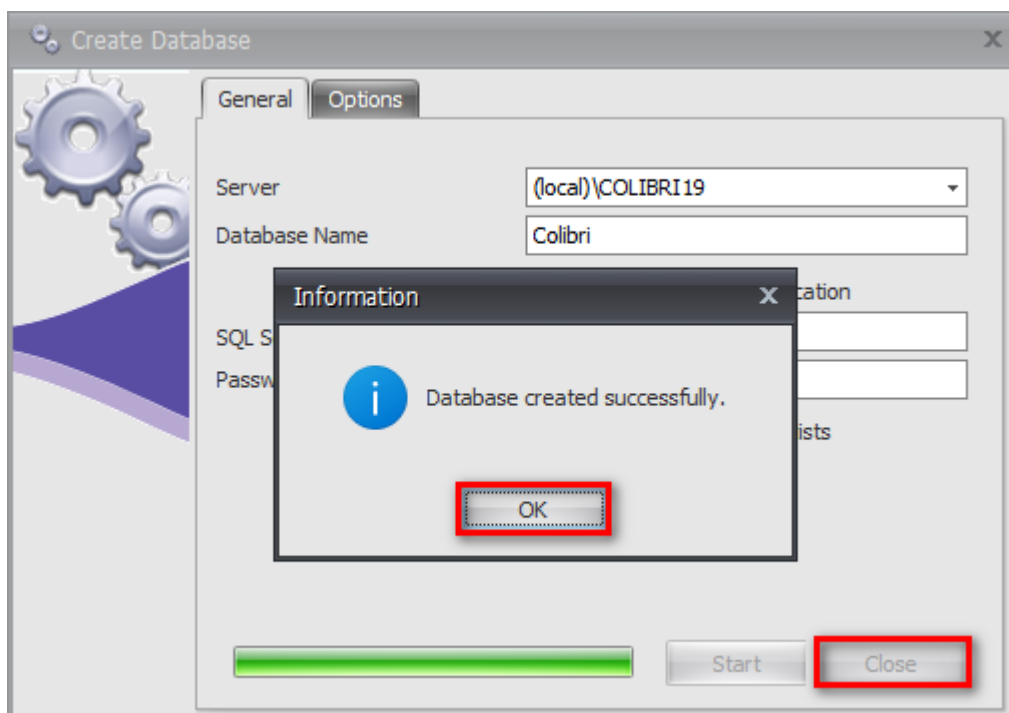
- Start Colibri and within the login form, go in Tools\Create database:

The screenshot shows the Colibri login interface. At the top, it displays 'Version: 24.1.0' and 'Release Date: 5/16/2024'. The main heading is 'Login'. Below this, there are three input fields: a database selector (with a cylinder icon and a dropdown arrow), a 'User' field (with a person icon), and a 'Password' field (with a key icon). A 'Login' button is positioned below these fields. At the bottom, there are three buttons: 'Help', 'Tools', and 'Privacy Statement'. The 'Tools' button is highlighted with a blue background and has a dropdown arrow. Its dropdown menu is open, showing two options: 'Create DB' and 'Manage Connections'. The 'Create DB' option is highlighted with a red rectangular border. The 'Privacy Statement' button has the text 'tion' visible next to it. A copyright notice '© Copyright' is partially visible at the bottom left.

Input a database name, select to Insert Demo Data and Start:



Once the database created, close the database creation window:



Back to the login form, input the default login: Administrator / password:

The screenshot shows the Datacolor Colibri login window. At the top, it displays 'Version: 24.1.0' and 'Release Date: 5/16/2024'. The main heading is 'Login'. Below this, there are three input fields: a server path dropdown menu showing '\\(local)\COLIBRI19\Colibri', a username field containing 'Administrator', and a password field with masked characters. A red rectangular box highlights the 'Login' button. Below the button are three links: 'Help', 'Tools', and 'Privacy Statement'. At the bottom, there is a checkbox labeled 'Update Connection' and a copyright notice: '© Copyright Datacolor, all rights reserved.'

You are now connected to your Colibri database.